

台灣永大壓鑄機有限公司

YOTA(Taiwan)die Casting Machine Co.Ltd.

YOTA

Since 1964
DIGITALIZED TECHNOLOGY

TAR-Z 系列
SERIES

INDUSTRY **4.0**

熱室鋅合金壓鑄機

Hot Chamber Pressure Die Casting Machines

TAR 30Z

TAR 60Z

TAR 125Z

TAR 200Z

TAR 315Z



60噸 全罩式

TAR-60T

FULLY COVER TYPE

TAROKO series

FULL DIGITAL CONTROL
HOT-CHAMBER DIE CASTING M/C
全數據化熱室壓鑄機



電動調模系統
ELECTRICAL GEAR
MOTOR DIE-HEIGHT
ADJ SYSTEM.



無線網路連結功能
WIRELESS REMOTE
OPERATION SYSTEM



產品突落缸系統
COMPONENT KNOCK
DROP SYSTEM



鎖模力及模溫顯示
CLAMPING FORCE &
DIE TEMPERATURE
DISPLAY



直結式高性能射出系統
HIGH PERFORMANCE
INJECTION HYDRAULIC SYS.
(CLOSE-LOOP IS OPTIOANL)



射出位置油壓升降座系統
INJECTION POSITION
HYDRAULIC LIFTER



伺服節能油壓系統(選用)
ENERGY SAVING
HYDRAULIC SYSTEM.
(OPTIONAL)



電子液壓液面及油溫控制
HYDRAULIC FLUID
LEVEL & TEMPERATURE
CONTROL



射數位化射出行程控制+
一體成行射出缸
DIGITAL INJECTION STROKE
CONTROL +ONE PIECE
FRAME INJECTION
CYLINDER



射出部冷卻流量計
INJECTION SYS. COOLING
WATER FLOW INDICATOR



10吋觸控螢幕+PLC控制器
10"INCH TOUCH
SCREEN +PLC & PID
CONTROL



數位化押出行程控制
DIGITAL EJECTOR
STROKE CONTROL



數合乎人體工學的堅固防水操作箱
COMFORTABLE &
WATERPROOF
OPERATION PANEL



電氣射料管及鵝頸 PID加熱系統
PID ELECTRICAL NOZZLE
& GOOSENECK HEATER
SYSTEM



射出噴料安全防護板
METAL FLASH PROTECTION
COVER



日本產燃燒機及 PID 控制
MADE IN JAPAN DIESEL
BURNER & PID CONTROL

附屬週邊裝置

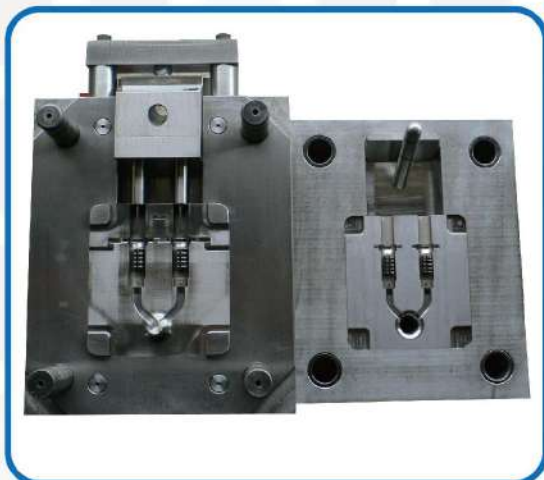
AUXILIARY EQUIPMENT



SPV series auto spray
SPV 型自動噴霧機



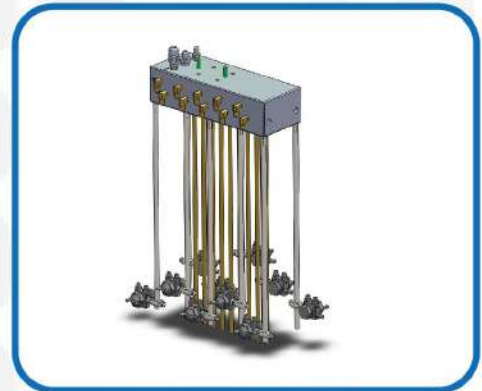
EXG series auto-extractor
EXG 型自動取出機



Tools Turn-key solution
模具開發

YOTA

TAROKO series



Nozzle spray set
噴頭型噴霧座



REAL-TIME INJECTION SYS.
閉迴路射出系統



模溫機/DIE TEMPERATURE
CONTROL UNIT-OIL

熱室壓鑄機規格表

SPECIFICATION

YOTA

TAROKO series

| HOT CHAMBER PRESSURE DIE CASTING MACHINE SPECIFICATION | | | | | | | |
|--|-----------------------|--------|----------------|----------------|----------------|----------------|----------------|
| 項目 | ITEM | UNIT | TAR-30Z | TAR-60Z | TAR-125Z | TAR-200Z | TAR-315Z |
| 合模力 | LOCKING FORCE | TON | 30 | 60 | 125 | 200 | 315 |
| 合模行程 | CLOSING STROKE | MM | 180 | 215 | 275 | 357 | 425 |
| 押出力 | EJECTOR FORCE | TON | 2.5 | 2.5 | 7 | 7.9 | 12.3 |
| 押出行程 | EJECTOR STROKE | MM | 50 | 60 | 70 | 75 | 90 |
| 夾模厚度 | DIE-HEIGHT MIN-MAX | MM | 100- 320 | 170- 340 | 200- 450 | 250-500 | 250-600 |
| 大柱內尺寸 | SPACE BETWEEN TIE BAR | MM | 285* 285 | 326* 326 | 395*395 | 465*465 | 540*540 |
| 大柱直徑 | TIE BAR DIAMETER | MM | 50 | 60 | 75 | 85 | 110 |
| 射出位置 | SHOT POSITION | MM | 0, -50 | 0, -65 | 0, -80 | 0, -100 | 0, -145 |
| 最大射出力 | MAX CASTING FORCE | TON | 4 | 5.2 | 10 | 11 | 16.1 |
| 射出行程 | MAX SHOT STROKE | MM | 120 | 120 | 200 | 200 | 200 |
| 射出杆直徑 | INJECTION PLUNGER D | MM | 45 | 50 | 60 | 70 | 80 |
| 射出面積 | CASTING AREA | CM2 | 120 | 189 | 344 | 656 | 768 |
| 射出壓力 | INJECTION PRESSURE | KG/CM2 | 249 | 264 | 363 | 320 | 410 |
| 最大射出重量 | MAX CASTING WEIGHT | KG | 0.97KG | 1.0KG | 1.4KG | 3.6KG | 4.5KG |
| 坩鍋容量 | CRUCIBLE CAPACITY | KG | 200KG ZN | 270KG ZN | 500KG ZN | 600KG ZN | 700KG ZN |
| 操作次數/小時 | CYCLE/H | N/H | 1000 | 1000 | 750 | 650 | 600 |
| 電氣需求 | ELECTRICAL POWER | KW | 5.5 | 7.5 | 15 | 15 | 22 |
| 機械重量 | WEIGHT OF MACHINE | KG | 3000 | 4000 | 5500 | 8000 | 12000 |
| 機械尺寸 | DIMENSIONS(L*W*H) | MM | 3500*1900*2000 | 3500*1900*2000 | 3200*1650*2100 | 3700*1700*2150 | 4200*1900*2300 |

2017.02

*以下項目為選用 : (OPTIONAL ITEMS)

*A. 損耗零件 Wear parts:

- A1. 鵝頸 / Gooseneck
- A2. 射出活塞 / Pistons
- A3. 射出活塞環 / Piston rings
- A4. 鑄鐵坩鍋 / Cast Crucibles
- A5. 噴嘴 / Nozzle bodies and nozzle tips

*B. 先進裝置 / Advanced device :

- B1. 射出曲線顯示 / Injection graphic system
- B2. 鎖模力顯示器 / Die clamping control system.
- B3. 伺服油壓省電系統 / Energy saving system.
- B4. 電氣熔解爐 / Electrical melting furnace.
- B5. 模溫顯示系統 / Tools temperature display system.
- B6. 閉迴路射出系統 / Real-Time injection system.
- B7. 自動安全門 / Automatic safety door.

AIWAN HEADQUARTER :

台灣永鈦機械有限公司 YOTA (TAIWAN) INTERNATIONAL CO.LTD.

台灣省台南市永康區大灣東路22巷13號 電話 :+886-6-2716038 傳真 :+886-6-2715686

ADD:71064 No.13, Ln. 22, Dawan E. Rd., Yongkang District, Tainan , Taiwan(R.O.C)

TEL :+886-6-2716038 (REP) FAX:+886-6-2715686

E-MAIL : twyota@gmail.com Website:www.yotadc.com.tw

Agent



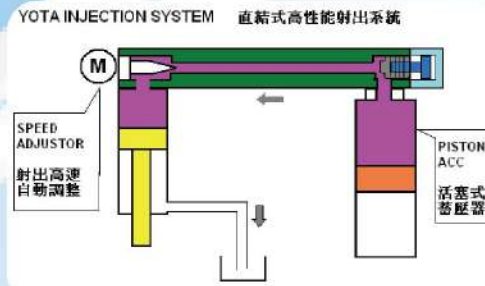
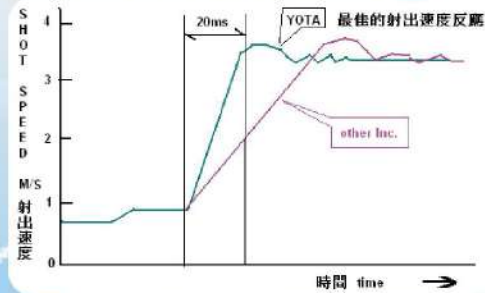
Ver 2017.02

強而有力的射出系統-業界獨有德國式射出系統，及一體成型的射出缸，配合全數位控制

High response injection hydraulic circuit for top performance

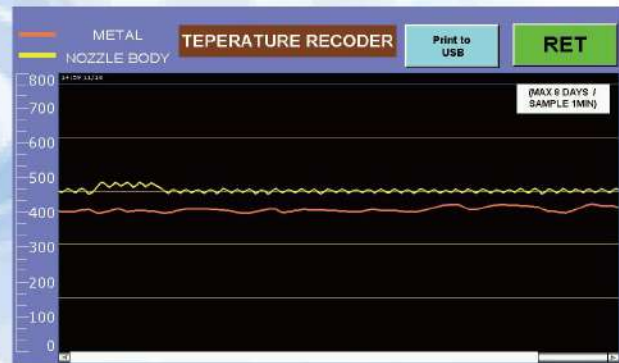
直接連結蓄壓器的射出系統，油路最短，射出反應速度最快，配合比業界加大容量的活塞蓄壓器，射出時壓力最穩定，提供強而有的動力來源，射出行程，高低速度及壓力都從螢幕可以直接調整並監看，客戶可以選用閉迴路射出控制系統，做更精密控制。

Directly connect one piece design injection cylinder & accumulator. It get shortest path. Customer can get very quick injection speed response & stable performance. The system provide injection stop function for exhaust the nozzle air before shot. It can improve the porosity problem & get a good surface casting part. The large capacity piston type accumulator, less pressure drop! More stable pressure during shot. Customer can easy change shot start position, speed & pressure on the touch screen directly. Customer can select close-loop injection control system for more accurated injection. (optional)



□ 射出性能曲線系統 (標準配備功能)
Injection graphic system

□ 料溫及射料管溫度曲線紀錄功能，可紀錄八天
Metal & nozzle body PID temperature control & curve recorder, Max 8 days.



□ 每模生產參數紀錄，生產追溯的利器
The monitoring & stroage of each shot casting parameters.

□ 全數位化控制，使用方便，精密度高，可記憶
Fully digital parameter set, easy setting & memorable.

輸入參數紀錄 日期: 10181820

| 項目 | 1. 第一速度 (M/S) | 2. 第二速度 (M/S) | 3. 速度上升時間 (ms) | 4. 射出壓力 (KGS) | 5. 壓力上升時間 (ms) | 6. 射出量 (CC) | 7. 射出溫度 (C) | 8. 料溫 (C) | 9. 料管溫度 (C) | 10. 噴嘴溫度 (C) |
|------------|---------------|---------------|----------------|---------------|----------------|-------------|-------------|-----------|-------------|--------------|
| 1018182632 | 0.08 | 0.21 | 14 | 108.1 | 80 | 34.0 | 33.0 | 35.0 | 36.0 | 124 |
| 1018182827 | 0.06 | 0.21 | 7 | 106.3 | 80 | 33.0 | 33.0 | 35.0 | 36.0 | 126 |
| 1018182852 | 0.11 | 0.18 | 45 | 103.3 | 80 | 33.0 | 34.0 | 35.0 | 36.0 | 121 |
| 1018182727 | 0.11 | 0.18 | 52 | 103.9 | 80 | 33.0 | 34.0 | 35.0 | 36.0 | 119 |
| 1018182722 | 0.12 | 0.18 | 54 | 106.8 | 80 | 34.0 | 33.0 | 35.0 | 36.0 | 119 |
| 1018182736 | 0.12 | 0.18 | 51 | 103.0 | 80 | 34.0 | 33.0 | 35.0 | 36.0 | 119 |
| 1018184750 | 0.11 | 0.18 | 68 | 106.3 | 80 | 33.0 | 33.0 | 35.0 | 36.0 | 118 |
| 1018184809 | 0.10 | 0.18 | 69 | 103.0 | 80 | 33.0 | 33.0 | 35.0 | 36.0 | 118 |
| 1018184813 | 0.10 | 0.18 | 57 | 103.9 | 80 | 33.0 | 33.0 | 35.0 | 36.0 | 120 |
| 1018184836 | 0.11 | 0.18 | 68 | 103.3 | 80 | 33.0 | 33.0 | 35.0 | 36.0 | 115 |
| 1018184852 | 0.10 | 0.18 | 61 | 103.9 | 80 | 33.0 | 33.0 | 35.0 | 36.0 | 123 |
| 1018184905 | 0.10 | 0.18 | 56 | 106.9 | 80 | 33.0 | 33.0 | 35.0 | 36.0 | 123 |
| 1018184925 | 0.11 | 0.18 | 68 | 103.3 | 80 | 33.0 | 33.0 | 35.0 | 36.0 | 124 |
| 1018184942 | 0.10 | 0.18 | 58 | 106.9 | 80 | 33.0 | 33.0 | 35.0 | 36.0 | 123 |
| 1018184958 | 0.10 | 0.18 | 62 | 106.3 | 80 | 33.0 | 33.0 | 35.0 | 36.0 | 123 |
| 1018185015 | 0.10 | 0.18 | 87 | 103.3 | 80 | 33.0 | 33.0 | 35.0 | 36.0 | 122 |
| 1018185022 | 0.10 | 0.18 | 56 | 107.2 | 80 | 33.0 | 33.0 | 35.0 | 36.0 | 121 |
| 1018185048 | 0.11 | 0.18 | 65 | 106.6 | 80 | 33.0 | 33.0 | 35.0 | 36.0 | 124 |
| 1018175405 | 0.08 | 0.21 | 13 | 106.6 | 80 | 34.0 | 34.0 | 35.0 | 36.0 | 119 |
| 1018175421 | 0.12 | 0.18 | 51 | 103.9 | 80 | 34.0 | 34.0 | 35.0 | 36.0 | 127 |

